

Project Features

- Project Station
- Preliminary Alternative Segment, Node, and Label
- Preliminary Alternative Segment Utilizing Existing Distribution Line ROW
- Proposed Project Station Boundary
- Study Area

Existing Utilities

- Existing Substation
- Existing 138KV Transmission Line
- Existing 230KV Transmission Line
- Existing Distribution Line

Transportation Features

- Helipoint
- FM Road
- County / Local Road
- Railroad

Existing Land Use Features

- School
- Place of Worship
- Communication Tower
- Water Well
- Oil / Gas Pipeline

Hydrologic Features

- NHD River / Stream
- NHD Waterbody

Cultural Features

- Cemetery

Administrative Boundaries

- Parcel Boundary
- City Limit

If approved, only one route (consisting of multiple route segments) from Forest Substation to the Proposed War Eagle Substation to Porter Substation will be selected by the Public Utility Commission of Texas (PUCT). All routes and route segments in this notice are available for selection and approval by the PUCT.

Note: Sensitive cultural resource data are not shown on this map as these data are not to be reproduced, distributed, or released to the public.

Some data layers including property boundaries, pipelines, railroads, and oil/gas well also obtained from third-party sources are inaccurate to varying degrees. These data have not been corrected and should be used as a general guide to feature locations only.

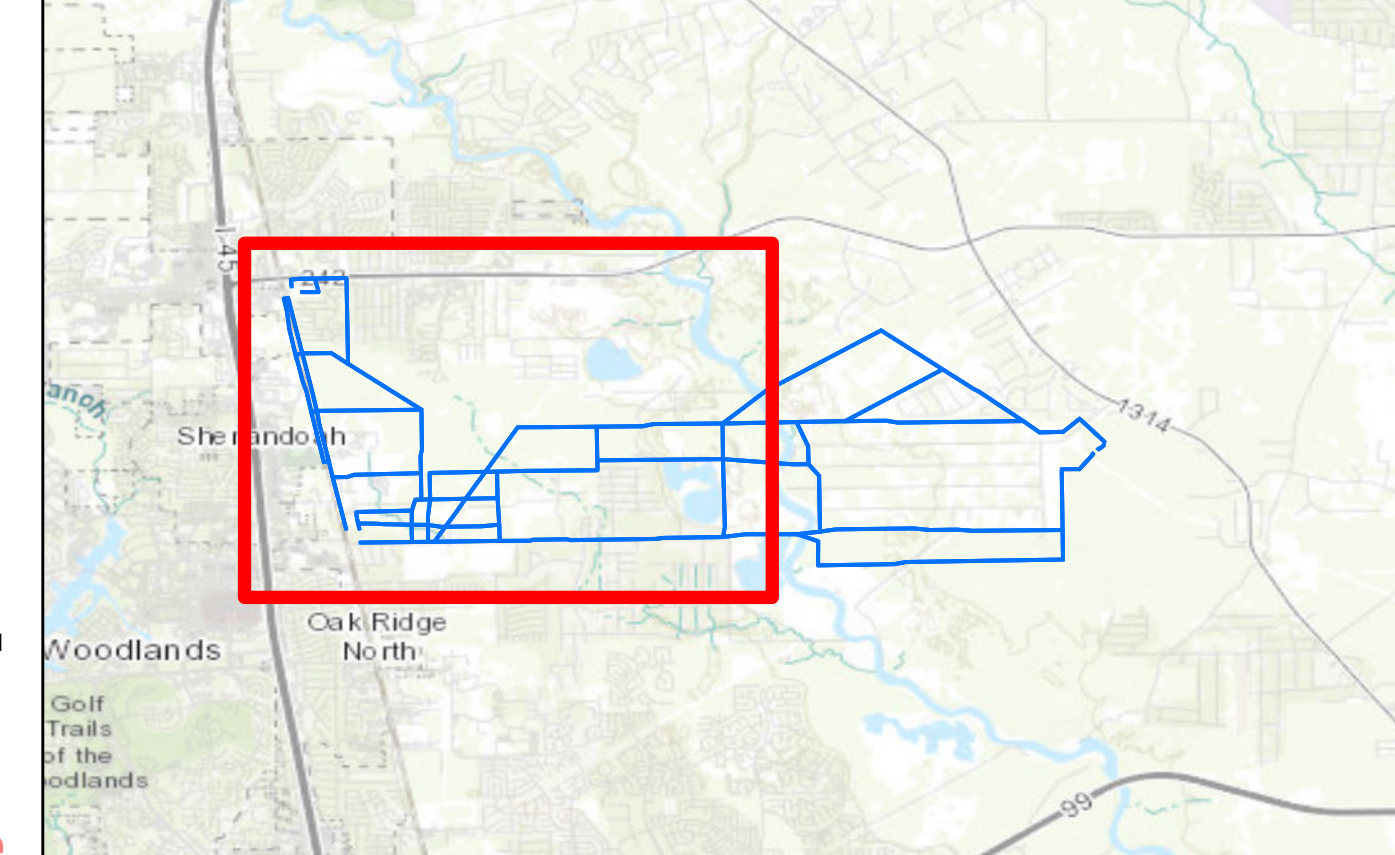
Digitalization of initial preliminary transmission line segments was performed based on aerial interpretation of these features.

Some legend symbols are enlarged for easier identification.

Once an alternative route is selected and approved by the Commission, the represented centerline is subject to modification after access has been cleared and on the ground surveys have been completed to identify unknown constraints or the extent of known constraints.

Base Map: Google Satellite Imagery

**Preliminary and Subject to Change**



1

FOREST TO WAR EAGLE TO PORTER  
138 KV TRANSMISSION LINE PROJECT

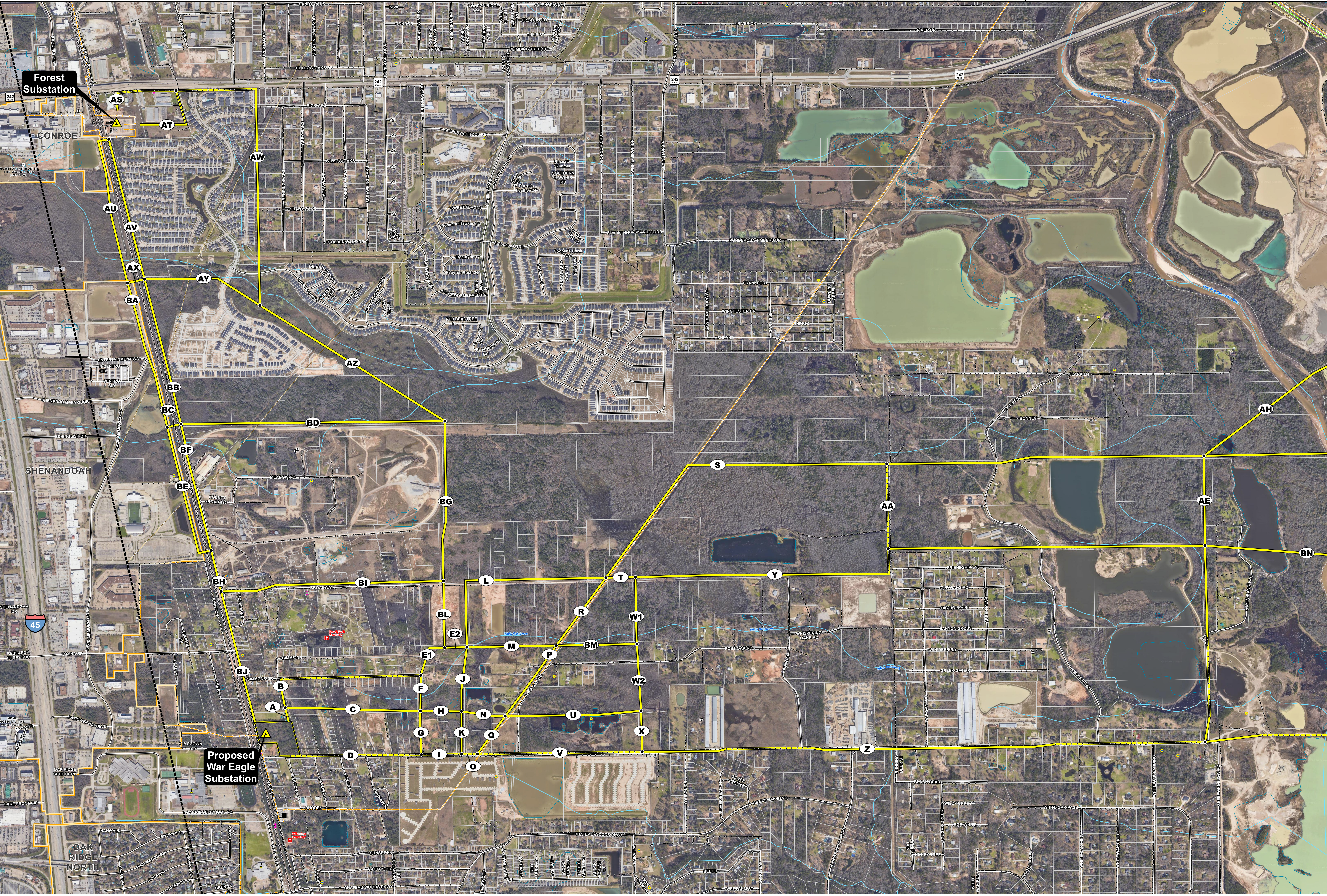
**PRELIMINARY ALTERNATIVE  
SEGMENTS WITH  
ENVIRONMENTAL CONSTRAINTS**

0 500 1,000 1,500 2,000  
Feet

entergy

WSP

Date: 1/22/2026





Project Features

- Project Station
- Preliminary Alternative Segment, Node, and Label
- Preliminary Alternative Segment Utilizing Existing Distribution Line ROW
- Proposed Project Station Boundary
- Study Area

Existing Utilities

- Existing Substation
- Existing 138KV Transmission Line
- Existing 230KV Transmission Line
- Existing Distribution Line

Transportation Features

- FM Road
- County / Local Road
- Railroad

Existing Land Use Features

- School
- Place of Worship
- Communication Tower
- Water Well
- Oil / Gas Pipeline

Hydrologic Features

- NHD River / Stream
- NHD Waterbody

Cultural Features

- Cemetery

Administrative Boundaries

- Parcel Boundary
- City Limit

If approved, only one route (consisting of multiple route segments) from Forest To War Eagle Substation to Porter Substation will be selected by the Public Utility Commission of Texas (PUCT). All routes and route segments in this notice are available for selection and approval by the PUCT.

Note: Sensitive cultural resource data are not shown on this map as these data are not to be reproduced, distributed, or released to the public.

Some data layers including property boundaries, pipelines, railroads, and oil/gas well also obtained from third-party sources are inaccurate to varying degrees. These data have not been corrected and should be used as a general guide to feature locations only.

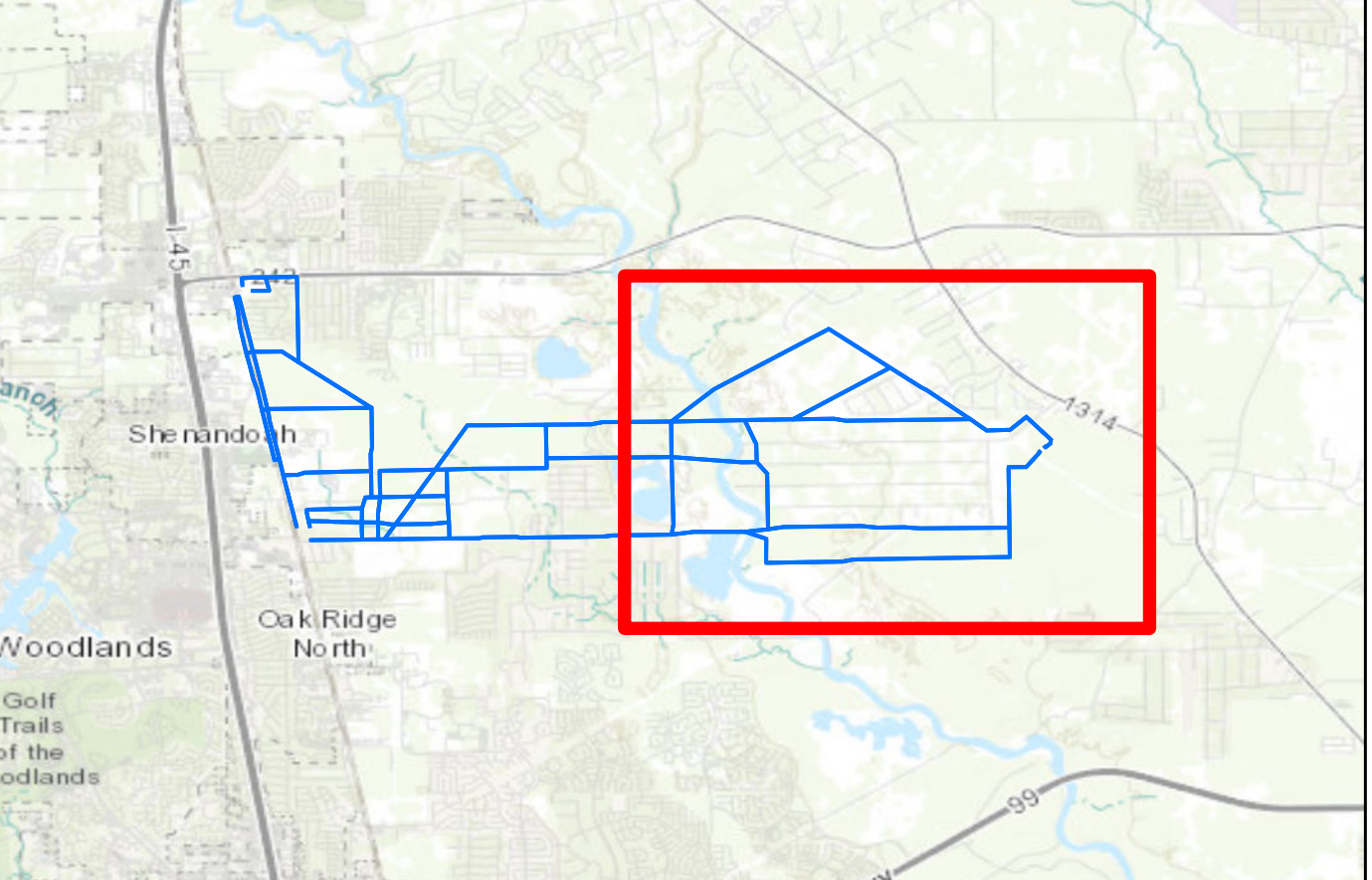
Digitization of initial preliminary transmission line segments was performed based on aerial interpretation of these features.

Some legend symbols are enlarged for easier identification.

Once an alternative route is selected and approved by the Commission, the represented centerline is subject to modification after access has been granted and on the ground surveys have been completed to identify unknown constraints or the extent of known constraints.

Base Map: Google Satellite Imagery

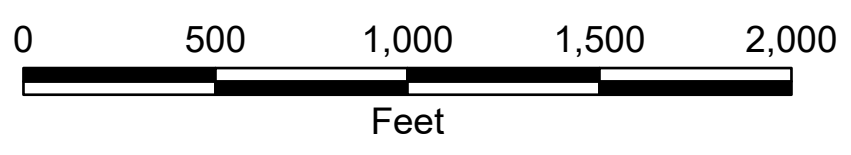
Preliminary and Subject to Change



2

FOREST TO WAR EAGLE TO PORTER  
138 KV TRANSMISSION LINE PROJECT

PRELIMINARY ALTERNATIVE  
SEGMENTS WITH  
ENVIRONMENTAL CONSTRAINTS



entergy



wsp

Date: 1/22/2026

